



# 55

Bethune St.

11<sup>th</sup> FLOOR PENTHOUSE

DENHAM  
WOLF

[www.denhamwolf.com](http://www.denhamwolf.com)

FOR LEASE

# WEST VILLAGE COMMERCIAL PENTHOUSE

55 Bethune Street | New York, NY 10014 | PH 11<sup>th</sup> Floor



Rendering

Denham Wolf Real Estate Services, as an exclusive agent, is pleased to present the opportunity to lease penthouse performing art space with 9,797 RSF on the 11th Floor of Westbeth.

## SPACE DETAILS

- 9,797 RSF
- Occupancy January 2026

[Virtual Tour](#)

## SPACE HIGHLIGHTS

- Column-free with high ceilings ideal for creative users, especially the Performing Arts
- Two studios with dressing rooms and dedicated restrooms
- Beautiful light
- Access to a shared terrace
- Dramatic column-free space
- 16' high barrel-vaulted ceilings
- Large architectural arched windows throughout

DENHAM  
WOLF

TO BOOK A TOUR

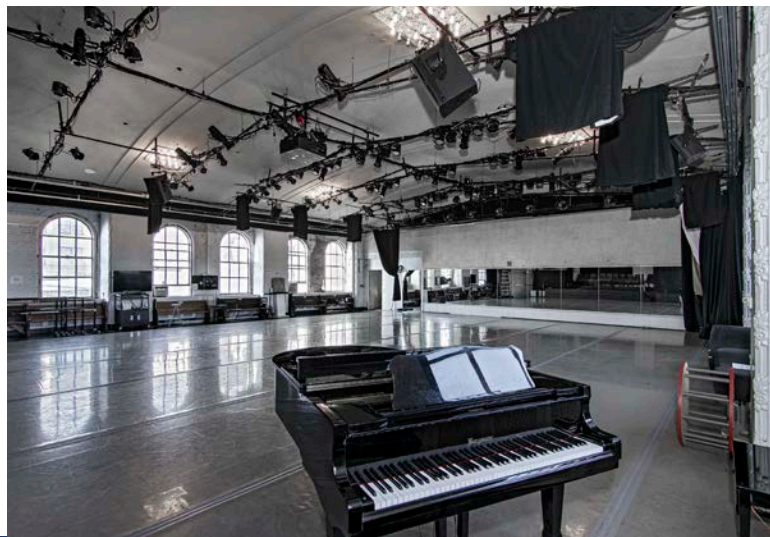
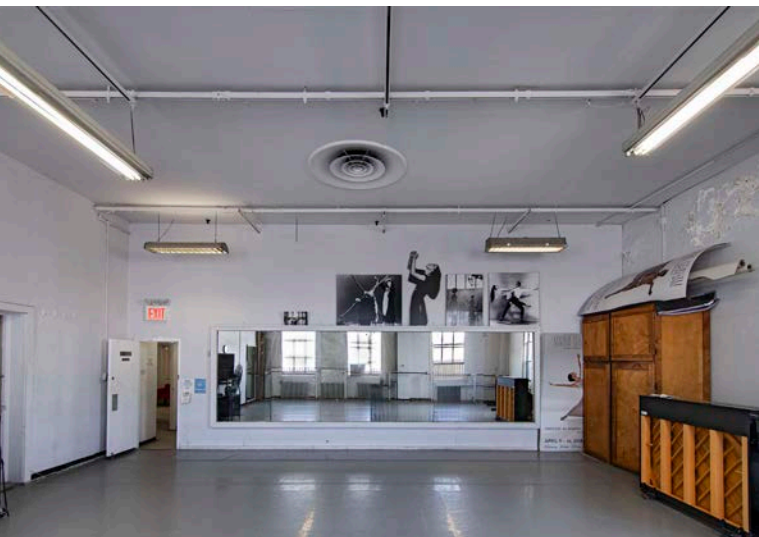
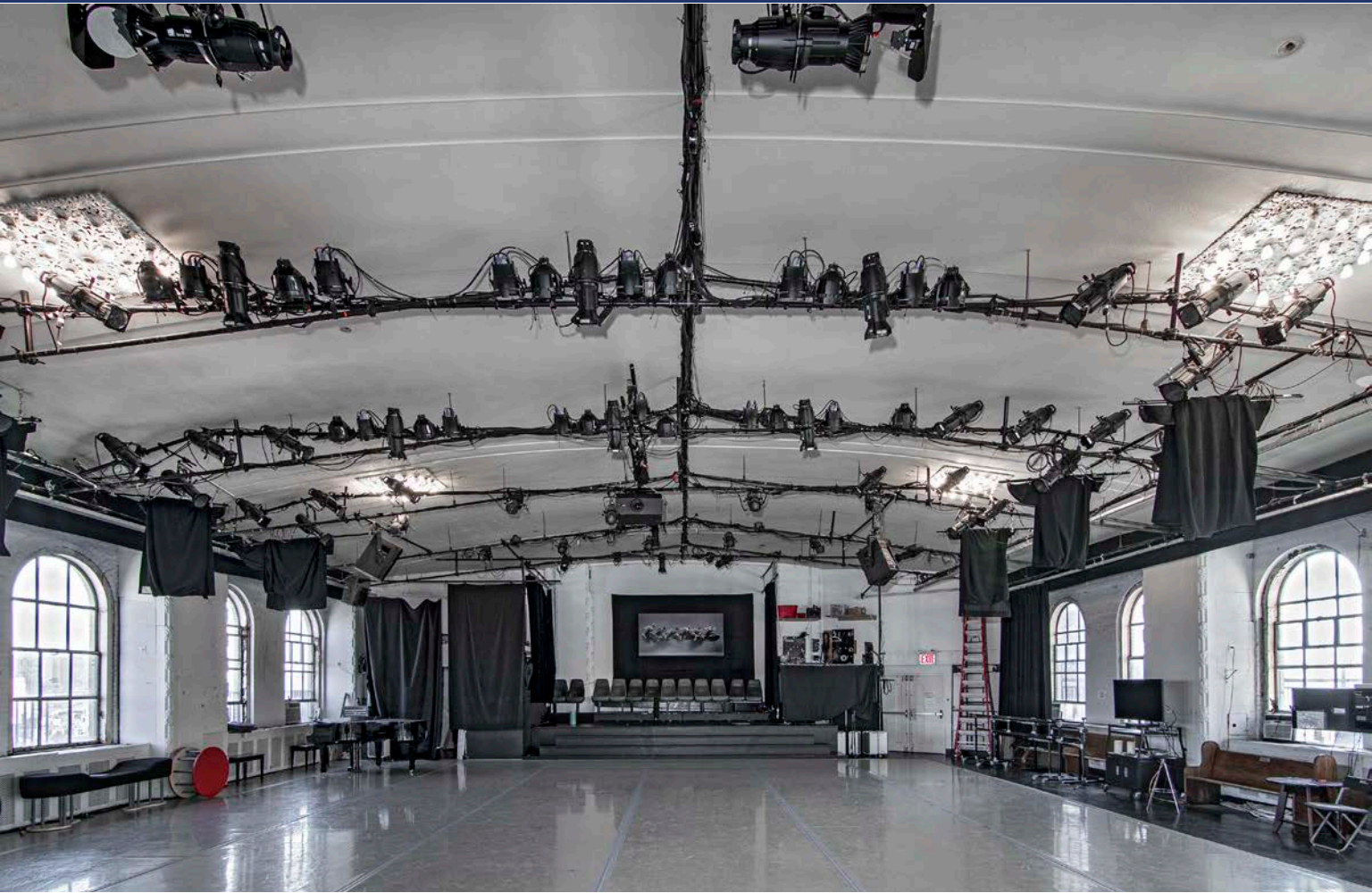
**Kate Hrobsky**  
khrobsky@denhamwolf.com  
646.814.8856

**Noah Trapolino**  
ntrapolino@denhamwolf.com  
646.307.4548

FOR LEASE

# WEST VILLAGE COMMERCIAL PENTHOUSE

55 Bethune Street | New York, NY 10014 | PH 11<sup>th</sup> Floor



DENHAM  
WOLF

TO BOOK A TOUR

**Kate Hrobsky**

khrobsky@denhamwolf.com

646.814.8856

**Noah Trapolino**

ntrapolino@denhamwolf.com

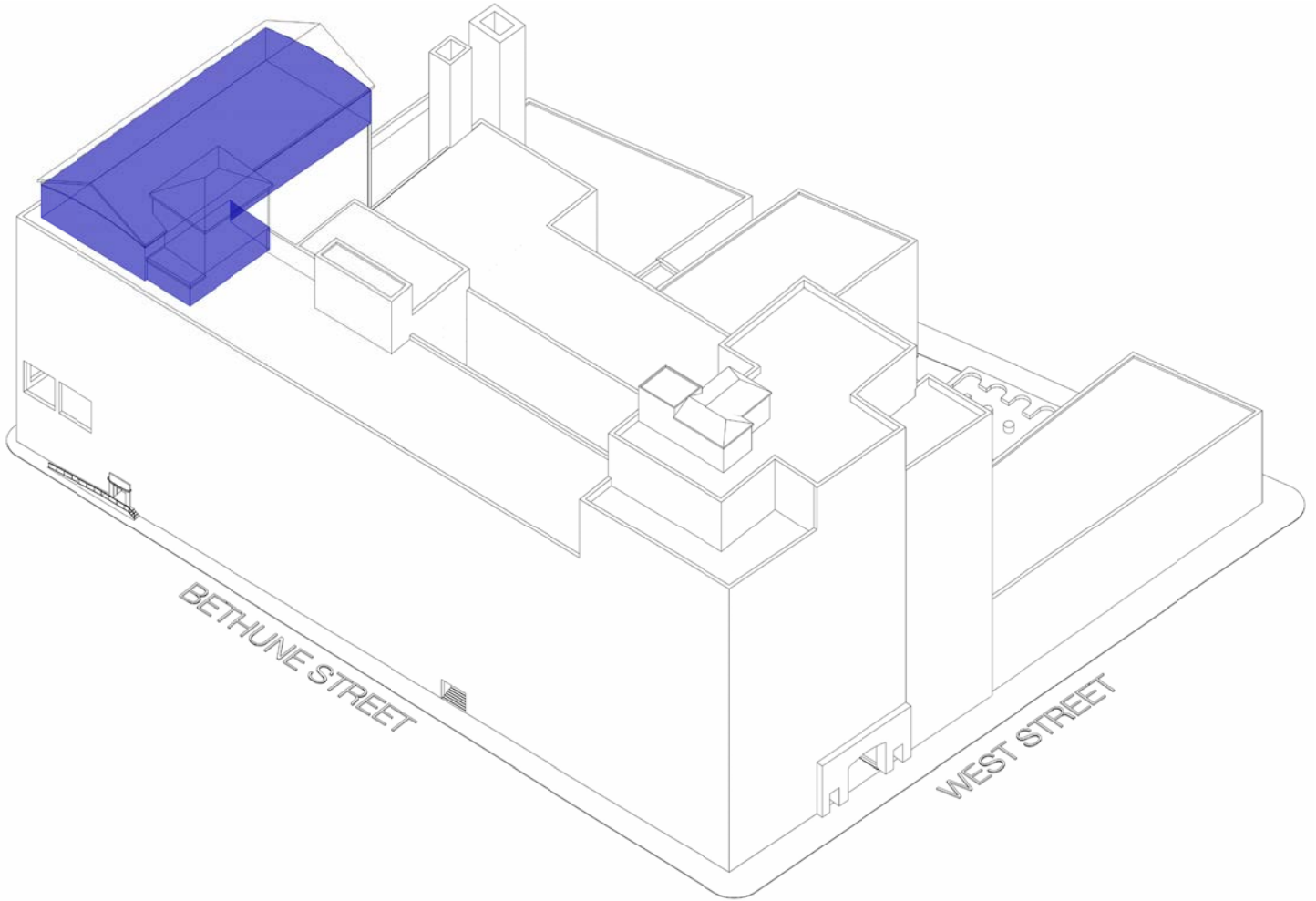
646.307.4548

FOR LEASE

# WEST VILLAGE COMMERCIAL PENTHOUSE

55 Bethune Street | New York, NY 10014 | PH 11<sup>th</sup> Floor

## Floor 11 | Axonometric

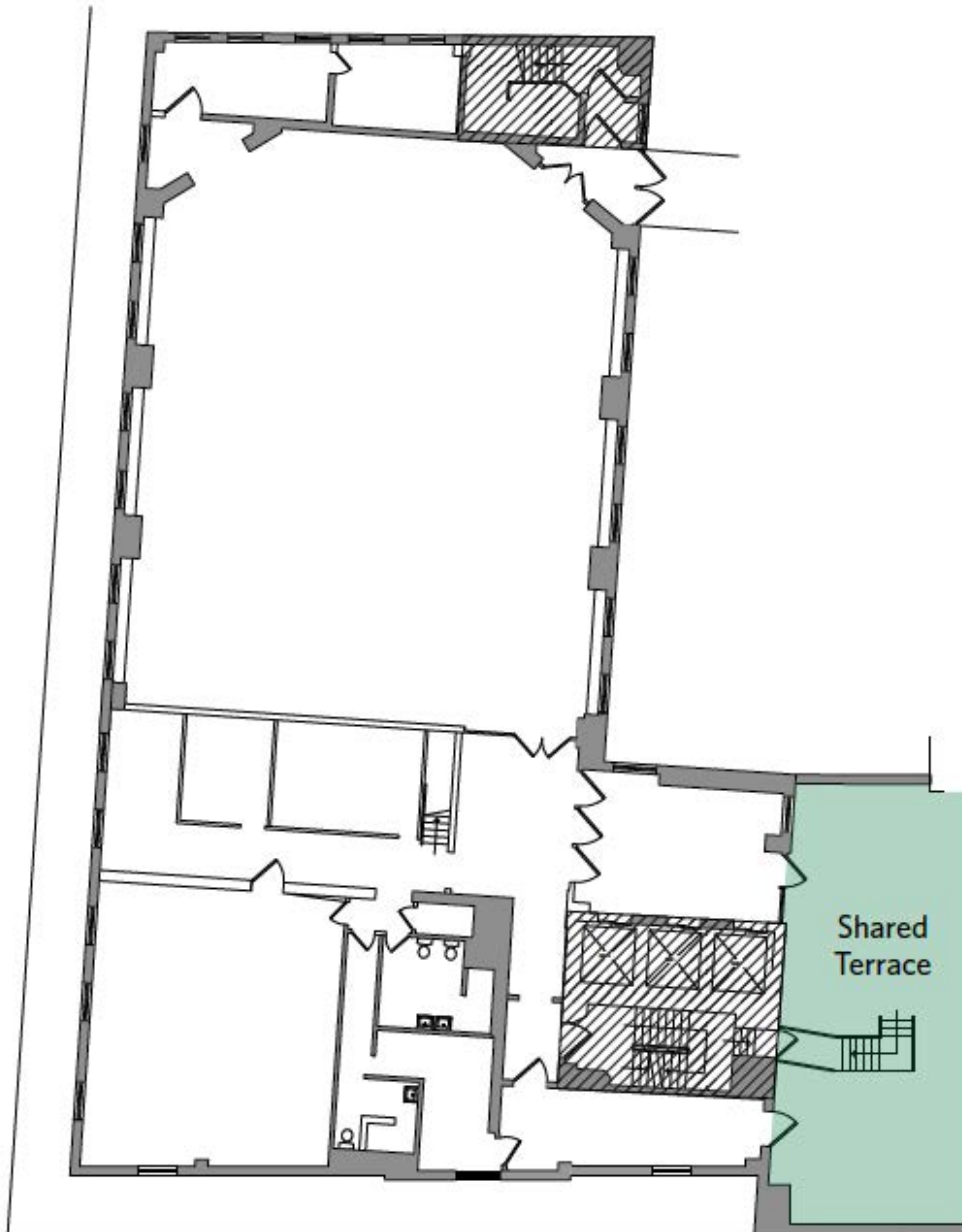


FOR LEASE

# WEST VILLAGE COMMERCIAL PENTHOUSE

55 Bethune Street | New York, NY 10014 | PH 11<sup>th</sup> Floor

Floor 11 | Floor Plan | 9,797 RSF



DENHAM  
WOLF

TO BOOK A TOUR

**Kate Hrobsky**

khrobsky@denhamwolf.com

646.814.8856

**Noah Trapolino**

ntrapolino@denhamwolf.com

646.307.4548

FOR LEASE

# WEST VILLAGE COMMERCIAL PENTHOUSE

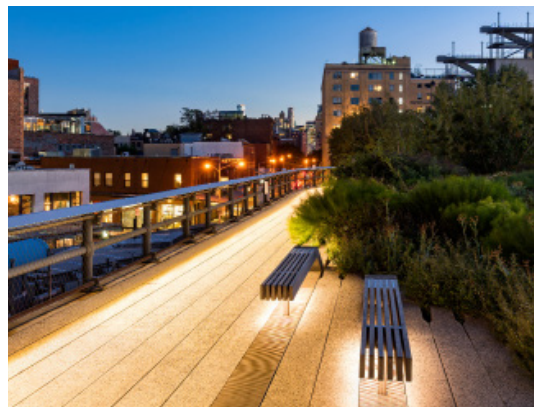
55 Bethune Street | New York, NY 10014 | PH 11<sup>th</sup> Floor

## The West Village | New York



### BE PART OF A NYC ART LEGACY

Approximately 9,797 RSF commercial penthouse space, flooded with light and overlooking some of the most quintessentially New York neighborhoods, including the West Village and Meatpacking District. Perched atop the world-renowned, Richard Meiers-designed Westbeth Artists complex, the spaces are dripping with cultural history and charm. As a tenant here you will become submerged within a place of inspiration and artistic vision and enjoy unique, jaw-dropping views. Created to provide affordable housing for artists and their families, Westbeth has long provided opportunities for creative expression and cultural engagement. This rare offering of high-rise space in the heart of the West Village will give you a chance to be part of that legacy.



DENHAM  
WOLF

TO BOOK A TOUR

**Kate Hrobsky**  
khrobsky@denhamwolf.com  
646.814.8856

**Noah Trapolino**  
ntrapolino@denhamwolf.com  
646.307.4548

FOR LEASE

# WEST VILLAGE COMMERCIAL PENTHOUSE

55 Bethune Street | New York, NY 10014 | PH 11<sup>th</sup> Floor



## Food & Drink

- Pastis**  
52 Gansevoort St
- Blank Street Coffee**  
19 8th Ave
- 11th Street Cafe**  
327 W 11th St
- The Standard**  
848 Washington St
- Katana Kitten**  
531 Hudson St
- Tarven On Jane**  
31 8th Ave
- Employees Only**  
510 Hudson St
- Sevilla**  
62 Charles St
- Don Angie**  
103 Greenwich Ave
- Roey's**  
1 Perry St
- Five Guy's Speakeasy**  
296 Bleecker St
- Coppelia**  
207 W 14th St
- Rosemary's**  
18 Greenwich St
- Tue Thai Food**  
3 Greenwich Ave
- Westville Chelsea**  
88th 7 Ave
- TAO Downtown**  
92 9th Ave
- Jack's Wife Freda**  
116 8th Ave

## Retailers

- Chrome Hearts**  
752 Washington St
- D'Agostino**  
790 Greenwich St
- Maje Bleecker**  
417 Bleecker St
- Sandro**  
415 Bleecker St
- Hanro**  
806 Washington St
- Christian Louboutin**  
59 Horatio St
- Parfums de Marly**  
805 Washington St
- Belstaff**  
62 Gansevoort St
- Bally**  
58 Gansevoort St
- AP House**  
52 Gansevoort St
- Hermes**  
46 Gansevoort St
- Intermix**  
365 Bleecker St
- Brunello Cucinelli**  
50 Gansevoort St
- Nordstrom**  
13 7th Ave

## Amenities

- |  |  |
|--|--|
| <b>01 Westbeth Gallery</b><br>55 Bethune St  | <b>07 Village Vanguard</b><br>178 7th Ave            |
| <b>02 White Columns</b><br>91 Horatio St     | <b>08 Equinox Gym</b><br>97 Greenwich Ave            |
| <b>03 Whitney Museum</b><br>99 Gansevoort St | <b>09 Chelsea Market</b><br>75 9th Ave               |
| <b>04 Highline</b><br>812 Washington St      | <b>10 Hudson River Park</b><br>Hudson River Greenway |
| <b>05 Little Island</b><br>Pier 55           | <b>11 Friends Apartment</b><br>90 Bedford St         |
| <b>06 Smalls Jazz Bar</b><br>183 W 10th St   |  |

TO BOOK A TOUR

**Kate Hrobsky**  
khrobsky@denhamwolf.com  
646.814.8856

**Noah Trapolino**  
ntrapolino@denhamwolf.com  
646.307.4548

DENHAM  
WOLF

FOR LEASE

# WEST VILLAGE COMMERCIAL PENTHOUSE

55 Bethune Street | New York, NY 10014 | PH 11<sup>th</sup> Floor



Standard Hotel



The Highline



Hudson River Park



Chelsea Market

MEATPACKING DISTRICT

CHELSEA



Whitney Museum

55  
Bethune St.

WEST VILLAGE

0.25 Mile Radius



Washington Square Park

DENHAM WOLF

TO BOOK A TOUR

**Kate Hrobsky**  
khrobsky@denhamwolf.com  
646.814.8856

**Noah Trapolino**  
ntrapolino@denhamwolf.com  
646.307.4548

The information contained herein has either been given to us by the owner of the property or obtained from sources that we deem reliable. We have no reason to doubt its accuracy but we do not guarantee it. All zoning, existing and buildable square footages, and uses must be independently verified. The prospective buyer should carefully verify all information contained herein. © 2024 Denham Wolf



## THE WESTBETH LEGACY

Since 1970, Westbeth Center for the Arts (“Westbeth”) has provided affordable space to a range of artists, cultural organizations, and commercial tenants in accordance with Westbeth’s mission. The 650,000 SF complex of 10 connected buildings is in Manhattan’s West Village, one of the most desirable neighborhoods in the city both residential and commercial uses.

Situated amongst the tree-lined, cobblestoned street of this high income and walkable neighborhood, the Westbeth campus is home to a vibrant community of artists spanning multiple generations. Created to provide affordable housing for artists and their families, Westbeth has long provided opportunities for creative expression and cultural engagement. As a tenant here you will become submerged within a place of inspiration and artistic vision and enjoy easy access to the longstanding community. A short walk away from the heart of the West Village and the Meatpacking District, the campus provides tenants with unparalleled access to the city’s highest end boutique district.

### Campus Highlights

- Walkability to Transit, Parks, and Commercial Hubs, Cultural attractions like Pier 51, Little Island, Whitney Museum, The West Village's Wine and Food Hub
- High Average Household Income
- Unique Creative Community
- Existing On Site Community Gallery
- Individually Landmarked Campus of Historic Significance
- Charming Details Such As Gorgeous Barrel-Vaulted Ceilings
- Floor-to-Ceiling Windows Facing Interior Courtyard